



# GRASS SEED MIXTURES 2026

# CONTENTS

<b>WELCOME</b>	4
<b>VARIETIES USED IN OUR MIXTURES</b>	6
<b>DURABILITY</b>	10
<b>SHORT TERM MIXTURES</b>	12
Tyne	13
Forth	14
Sprinter & Sprinter Plus	15
<b>MEDIUM TERM MIXTURES</b>	16
Aln	17
Till	18
Abundance	19
Maximiser	20
<b>LONG TERM MIXTURES</b>	22
Coquet	23
Persistor	24
Teviot	25
Bowmont	26
Endurance	27
Tweed	28
Endurance Upland	29
Yarrow	30
MSP Herb Ley	31
MSP Diamond	32
MSP Leisure	33
<b>FORAGE CROPS</b>	34
<b>YOUR GUIDE TO GRASSLAND HERBICIDE SELECTION</b>	36
<b>CONTACT INFORMATION</b>	37
<b>OUR TEAM</b>	38-39





# WELCOME

As part of Simpsons Malt Limited – a fifth-generation, UK-owned family malting and agricultural merchanting business founded in 1862 – McCreath Simpson & Prentice is committed to providing high-quality products and dedicated service across all departments, including grass and small seeds.

Our drive to help growers achieve successful crops is supported by our team of BASIS and FACTS qualified Farm Traders, who operate from the Highlands of Scotland down to North Yorkshire and combine generations of experience with modern agronomic expertise.

Each team member is trained across all aspects of small seed management, bringing together technical seed knowledge with a practical understanding of grassland husbandry. This is further supported by our in-house fertiliser and agrochemical departments, ensuring growers receive clear, consistent and practical advice tailored to their individual farming systems.

Year-on-year, we continue to see the value that well-established young grass delivers, from improved resilience in increasingly variable weather patterns to its significant contribution to livestock performance, soil health and the



wider farm enterprise. When a whole farm approach to establishment is taken, these advantages are maximised and deliver value that extends beyond the first season.

Looking ahead to 2026, demand is expected to remain strong following an exceptionally busy 2025 experienced across the industry. This sustained level of activity has inevitably tightened seed stocks and, in some cases, made suitable replacements difficult to secure.

Despite this, we are pleased to continue supplying first-choice varieties using the SRUC and NIAB recommended lists, allowing us to maintain the performance and consistency of our proven grass seed mixture range.

As always, if we can be of any assistance, please do get in touch.

**Alasdair Ralston**  
Small Seeds Manager

**“YEAR ON YEAR, WE CONTINUE TO SEE THE VALUE THAT WELL-ESTABLISHED YOUNG GRASS DELIVERS, FROM IMPROVED RESILIENCE IN INCREASINGLY VARIABLE WEATHER PATTERNS TO ITS SIGNIFICANT CONTRIBUTION TO LIVESTOCK PERFORMANCE, SOIL HEALTH AND THE WIDER FARM ENTERPRISE.”**



# VARIETIES USED IN OUR MIXTURES

## ITALIAN RYEGRASS

### **Barimax** (*Tetraploid*)

#### *Barenbrug*

Barimax is the first Barenbrug-bred Italian ryegrass to be first-choice recommended in Scotland and performs very well throughout the year, with excellent mid and late season performance.

### **Meribel** (*Diploid*)

#### *LG Seeds*

Meribel is one of the denser Italian ryegrasses with a high yield ranking in both harvest years. Seasonal production is distributed more towards the latter part of the growing season.

## INTERMEDIATE PERENNIAL RYEGRASS

### **Abergreen** (*Diploid*)

#### *Germinal*

Abergreen offers good conservation and grazing yields, especially during mid-season. It also boasts good quality and ground cover.

### **Aberzeus** (*Diploid*)

#### *Germinal*

Aberzeus provides excellent yields under both cutting and grazing, with a particular focus on late season grazing. It also has good D-value under grazing.

### **Boyne** (*Diploid*)

#### *DLF Seeds*

Boyne provides good yields under both grazing and cutting, with great spring growth. It performs better when cut early but, overall, has good quality all season.

### **Fintona** (*Tetraploid*)

#### *Barenbrug*

Fintona delivers exceptional performance under both cutting and grazing and with good sward density and grass quality, it is setting new standards in this intermediate perennial ryegrass group.

### **Nifty** (*Diploid*)

#### *DLF Seeds*

Nifty offers good grazing yields and excellent ground cover, making it an outstanding grazing variety throughout the season.

### **Pensel** (*Tetraploid*)

#### *LG Seeds*

Pensel gives good early season growth under both cutting and grazing for a variety heading at the end of the group. It also provides good quality at first cut.

### **Raccoon** (*Diploid*)

#### *Limagrain UK*

Raccoon is a consistently good yielding variety throughout the year for both conservation and grazing.

Varieties in mixtures can change based on availability, but will always be like-for-like replacements and from the SRUC and NIAB recommended lists.



## LATE PERENNIAL RYEGRASS

### Aspect (Tetraploid)

#### Limagrain UK

Aspect produces good first cut yields under conservation and very good quality at both first and second cuts. It also maintains good performance throughout the season under grazing.

### Ballintoy (Tetraploid)

#### Barenbrug

Ballintoy is a top performer under grazing and silage regimes. It has a particularly excellent early grazing yield, as well as a consistent growth pattern throughout the growing season.

### Bijou (Tetraploid)

#### RAGT

Bijou produces high-quality and consistently high yields under cutting, grazing and conservation. Its good early spring growth under grazing and excellent disease resistance, makes it a jewel of a grass variety

### Drift (Tetraploid)

#### Limagrain UK

Drift provides strong early spring growth alongside very good first cut yields under conservation and maintains good quality at both first and second cuts.

### Evocative (Diploid)

#### DLF Seeds

Evocative offers good overall conservation and grazing yields with relatively good herbage quality under conservation. It has a great rust resistance and a high ground cover and overall with Evocative you are very flexible in how the field is utilised.

### Gracehill (Tetraploid)

#### Barenbrug

Gracehill is a top-performing variety across all UK recommended lists, offering high-quality, high-yield forage for both silage and grazing. It excels in autumn grazing and delivers strong spring growth, ideal for early silage production.

### Nashota (Tetraploid)

#### DLF Seeds

Nashota has fairly good productivity for both grazing and conservation along with a relatively good conservation first cut digestibility. It has excellent ground cover under grazing management, with good ground cover under conservation management, while it also has excellent disease resistance.

### Toddington (Diploid)

#### DLF Seeds

Another popular selection in our mixtures this year, Toddington delivers good yields under both conservation and grazing, with good quality to boot. It also has good second cut yields under conservation and good late summer growth under grazing, with good disease resistance.

## HYBRID RYEGRASS

### Barclamp (Tetraploid)

#### Barenbrug

Barclamp is a late heading variety in this group and provides relatively consistent performance across the season. It is a very strong yielder for biomass and ME and has an A rating for ground cover.

## HYBRID FESCUE

### Lofa

#### DLF Seeds

Lofa has many properties in common with an Italian ryegrass, in particular the very fast establishment and high yield in the first cut. However, what makes Lofa special is the less aggressive growth, making it a very good companion grass for legumes and other grass species.



## TIMOTHY

### Comer

#### LG Seeds

Comer is one of the highest performing Timothys in the marketplace, especially in terms of spring grazing. It has excellent two-cut silage yields from swards of a typical erect type for an early Timothy.

## WHITE CLOVER

### AberLasting (Small Leaf)

#### Germinal GB Ltd

AberLasting is a resilient, long-lived clover hybrid. Its deep, vigorous root system gives excellent persistence under drought and heavy grazing, making it an ideal choice for permanent pastures in challenging environments.

### Alice (Large Leaf)

#### Barenbrug

With its large leaves, Alice achieves a high clover content and has a high grazing persistency. It also produces high total sward and excellent clover yields, which are maintained at a high level throughout the growing season.

### Demand (Small Leaf)

#### Limagrain UK

Demand is a very good variety with good yields of grass and clover as well as providing excellent ground cover under both light and hard defoliation.

### Iona (Medium Leaf)

#### DLF Seeds

Iona is a useful addition to the medium leaf size group showing good ground cover under rotational grazing.

### Rivendel (Small Leaf)

#### DLF Seeds

Rivendel is a very persistent variety in permanent pastures under grazing management. It has small rhizomes and short leaf growth, making it suitable for both cattle and sheep farming as it tolerates close grazing.

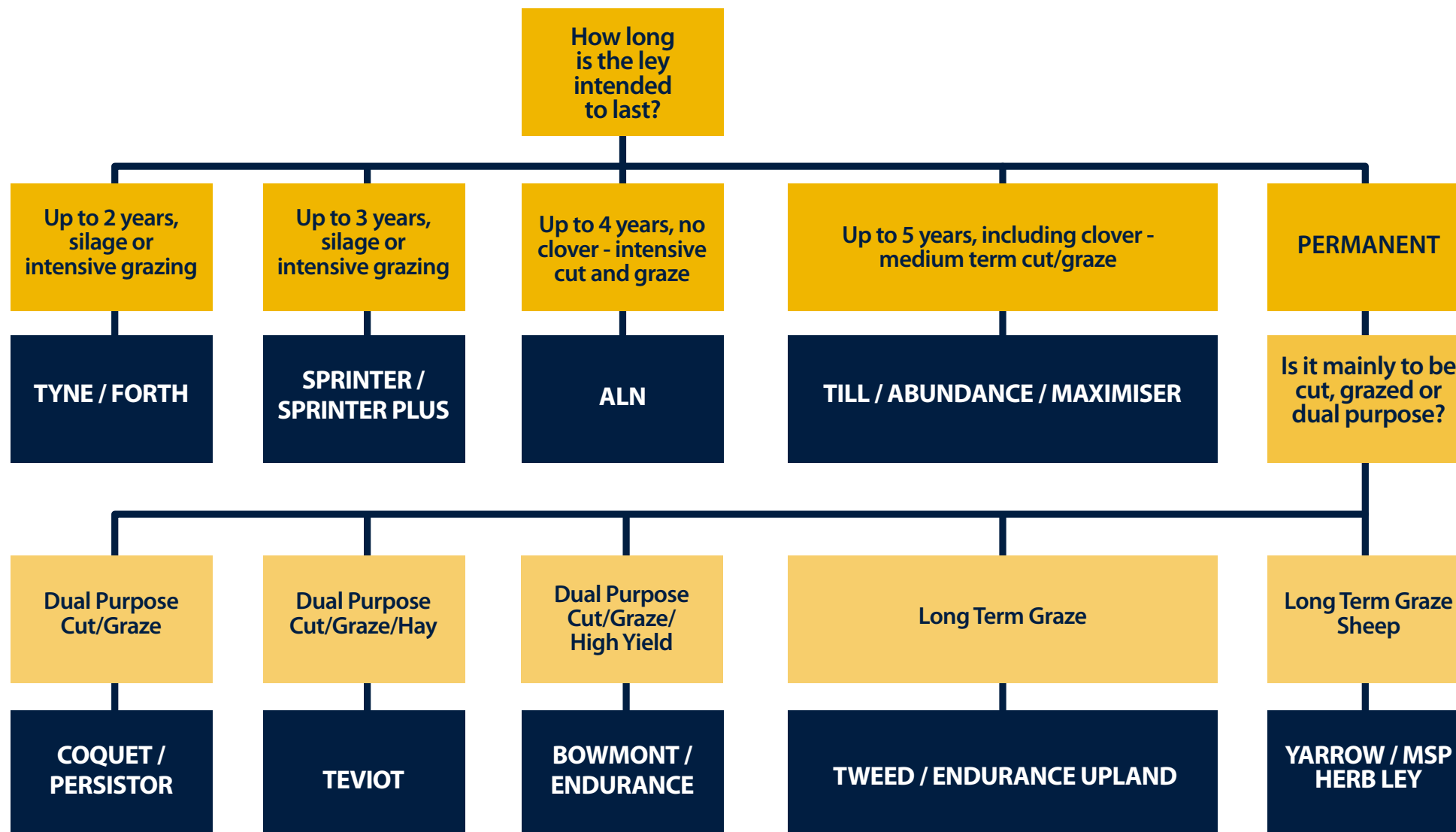
## RED CLOVER

### AberClaret

#### Germinal GB Ltd

AberClaret is a very productive variety with excellent spring and summer growth. It boasts very good durability, persisting for four to five years under cutting and is significantly more tolerant of grazing by dairy cattle.

# DURABILITY





# SHORT TERM MIXTURES

## Tyne

Up to two years, silage or intensive grazing

This mixture includes:

Meribel	Diploid	Italian Ryegrass
Alamo	Diploid	Italian Ryegrass

### Recommended sowing rate:

20-30 kgs/ha (8-12 kgs/acre)

### Features

- Designed for high production up to three cuts of silage or intensive grazing.
- Early spring growth.
- Quick to establish so can be used as a catchcrop.

### Benefits

- Very responsive to fertiliser nitrogen.
- Will produce high yields of good D-value silage.

### Management

- Cut at or about five days after ear emergence (mid to late May) for optimum D-value. Take second cut four to five weeks later to avoid too much stem. A third cut is feasible, although quantity and quality may be less.

### Additional Points

- Use approximately half the stated sowing rate and use as catchcrop sowing after an early harvest for ploughing the following spring.
- Red clover can be included to increase overall feed value; the weight of grass may be reduced in proportion.
- Will not last more than two years.
- By introducing a few kilos of hybrid and/or mid or late perennial tetraploid ryegrass (up to half the weight) and reduce the weight of Italian in proportion, you will be able to use this mixture for grazing.

# Forth

## Up to two years, silage or intensive grazing

This mixture includes:

AberClaret		Red Clover
Barclamp	Tetraploid	Hybrid Ryegrass
Meribel	Diploid	Italian Ryegrass
Nifty	Diploid	Intermediate Perennial Ryegrass

### Recommended sowing rate:

30 - 37 kgs/ha (12 - 15 kgs/acre)

**Tetraploid content:** 25.00%

### Average Heading Date:

May 1st + 35 days

### Features

- Designed for high production using rich yielding IRG and Hybrid in mixture with red clover.
- If managed correctly, it should give three cuts of quality silage in a season.

### Benefits

- Reduces reliance on fertiliser by utilising red clover N-fixing ability.
- Useful break crop in arable rotation.
- High protein silage.

### Management

- Careful grazing management required because of red clover.
- Ensure correct cutting height to maintain crown root of red clover.



# Sprinter & Sprinter Plus

## Up to three years, silage or intensive grazing

This mixture includes:

Raccoon	Diploid	Intermediate Perennial Ryegrass
Barclamp	Tetraploid	Hybrid Ryegrass
Meribel	Diploid	Italian Ryegrass
Lofa		Hybrid Fescue

### Recommended sowing rate:

35 kgs/ha (14 kgs/acre)

**Tetraploid content:** 20.00%

### Features

- High tetraploid content.
- Designed for high production up to three cuts of silage or intensive grazing.

### Benefits

- Provides considerable autumn grazing potential.
- A flexible mixture; potential for mixed management.
- High yielding and quick recovery.

### Management

- First cut in mid-May.
- Sprinter Plus mixture created with addition of 10.00% Global red clover and reduction of 10.00% Gosford IPR.
- With Sprinter Plus, careful grazing management required because of red clover.
- With Sprinter Plus, ensure correct cutting height to maintain crown root of red clover.



# MEDIUM TERM MIXTURES

Till & Herb Blend, Chatton Park Farm, Northumberland

## Aln

**Up to four years intensive cut and graze**

**This mixture includes:**

Barclamp	Tetraploid	Hybrid Ryegrass
Toddington	Diploid	Late Perennial Ryegrass
Evocative	Diploid	Late Perennial Ryegrass
Meribel	Diploid	Italian Ryegrass
Pensel	Tetraploid	Intermediate Perennial Ryegrass

**Recommended sowing rate:**

25 - 35 kgs/ha (10 - 14 kgs/acre)

**Tetraploid content:** 50.00%

**Average Heading Date:**

1st May + 39 days

**Mixture breakdown**

Late Perennial Ryegrass	36.00%
Intermediate Perennial Ryegrass	29.00%
Hybrid Ryegrass	21.00%
Italian Ryegrass	14.00%

**Features**

- A high production quality mixture which can be cut up to three times in a season using varieties that combine high yield and good D-value.
- Can also be used as a mixture for early and late grazing with silage cut.

**Benefits**

- Italian and hybrid ryegrasses ensure early spring growth combined with a high yield.
- Good spread of tetraploids and diploids give winter hardiness and a tighter sward.
- Highly palatable grass is ensured with good ground cover.
- Will be persistent for three to four years.

**Management**

- Cut at or around first ear emergence followed by second and perhaps a third.
- Can be grazed intensively all season.
- Intensive management is essential to avoid the sward going stemmy; high input = high output.

**Additional points**

- Useful for sowing as a shorter term rotational grass.
- Red clover can be included.

# Till

## Up to five years cut and graze

This mixture includes:

Evocative	Diploid	Late Perennial Ryegrass
Gracehill	Tetraploid	Late Perennial Ryegrass
Toddington	Diploid	Late Perennial Ryegrass
Fintona	Tetraploid	Intermediate Perennial Ryegrass
Pensel	Tetraploid	Intermediate Perennial Ryegrass
Abergreen	Diploid	Intermediate Perennial Ryegrass
Nifty	Diploid	Intermediate Perennial Ryegrass
Barclamp	Tetraploid	Hybrid Ryegrass
Alice	Large Leaf	White Clover
Iona	Small Leaf	White Clover

### Recommended sowing rate:

30 - 35 kgs/ha (12 - 14 kgs/acre)

**Tetraploid content:** 49.00%

### Average Heading Date:

1st May + 40 days

### Mixture breakdown

Intermediate Perennial Ryegrass	43.00%
Late Perennial Ryegrass	42.50%
White Clover	7.50%
Hybrid Ryegrass	7.00%

### Features

- Designed as dual-purpose ley for sowing as a rotational mixture.
- Will perform under intensive or extensive management systems.

### Benefits

- Can be pushed to give a high yield of digestible silage or grazing.
- Maintains good ground cover through the inclusion of a diploid ryegrass.
- Tetraploids ensure winter hardiness and palatability.

### Management

- Responds to a high input of nitrogen and can be silaged at the end of May or early June to achieve best quality at first cut, going on to produce a high yielding second cut or late season grazing.

### Additional points

- Timothy can be added if this mixture is required for hay or sheep grazing in less intensive management situations.
- If establishment year bulk is required in a direct reseed situation, the hybrid content could be increased or Italian ryegrass could be added.

# Abundance

## Up to four years cut and graze

This mixture includes:

Evocative	Diploid	Late Perennial Ryegrass
Pensel	Tetraploid	Intermediate Perennial Ryegrass
Raccoon	Diploid	Intermediate Perennial Ryegrass
Gracehill	Tetraploid	Late Perennial Ryegrass
Boyne	Diploid	Intermediate Perennial Ryegrass
Comer		Timothy
Demand	Small Leaf	White Clover
Iona	Medium Leaf	White Clover
Rivendel	Small Leaf	White Clover

### Recommended sowing rate:

35 kgs/ha (14 kgs/acre)

**Tetraploid content:** 35.71%

### Mixture breakdown

Late Perennial Ryegrass	35.71%
Intermediate Perennial Ryegrass	50.00%
White Clover	8.93%
Timothy	5.36%

### Features

- Designed to suit the early silage producer wanting three or more quality cuts each year.

### Benefits

- High tetraploid content means higher sugar levels aiding fermentation and stock intake.
- Aftermath grazing is highly palatable.
- Excellent D-value.

### Management

- Consistent and reliable quality for first cutting in the third week of May.

### Additional points

- Timothy gives longer growing period.
- Extended grazing period due to varietal selection.



# Maximiser

## Up to five years cut and graze

This mixture includes:

Pensel	Tetraploid	Intermediate Perennial Ryegrass
Raccoon	Diploid	Intermediate Perennial Ryegrass
Evocative	Diploid	Late Perennial Ryegrass
Gracehill	Tetraploid	Late Perennial Ryegrass
Abergain	Tetraploid	Late Perennial Ryegrass
Boyne	Diploid	Intermediate Perennial Ryegrass
Demand	Medium Leaf	White Clover
Iona	Small Leaf	White Clover
Alice	Large Leaf	White Clover

### Recommended sowing rate:

35 kgs/ha (14 kgs/acre)

**Tetraploid content:** 48.21%

### Mixture breakdown

Late Perennial Ryegrass	35.72%
Intermediate Perennial Ryegrass	55.35%
White Clover	8.93%

### Features

- High yielding and reliable varieties.

### Benefits

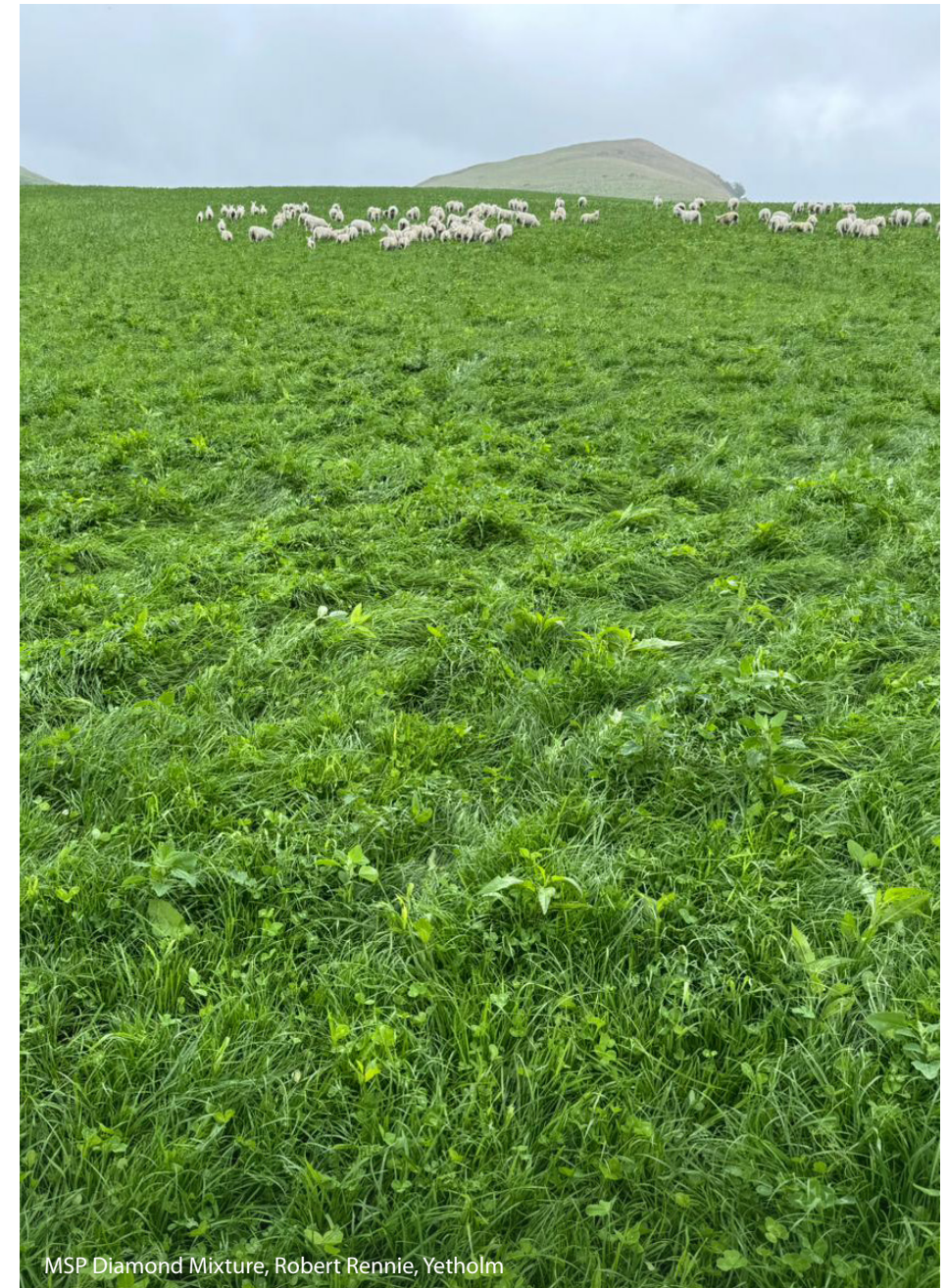
- A truly consistent performer all year.
- Higher sugar levels in tetraploids encourage stock to eat more because of improved palatability.
- High D-value varieties.
- Excellent pasture type grasses.

### Management

- This mixture will provide all-season growth.

### Additional points

- Clover remains the best natural source of vitamins and trace elements and improves productivity.



MSP Diamond Mixture, Robert Rennie, Yetholm



# LONG TERM MIXTURES

## Coquet

### Long-term dual purpose with early bite

This mixture includes:

Genesis	Diploid	Early Perennial Ryegrass
Toddington	Diploid	Late Perennial Ryegrass
Abergain	Tetraploid	Late Perennial Ryegrass
Boyne	Diploid	Intermediate Perennial Ryegrass
Nifty	Diploid	Intermediate Perennial Ryegrass
Gracehill	Tetraploid	Late Perennial Ryegrass
Comer		Timothy
Pensel	Tetraploid	Intermediate Perennial Ryegrass
Demand	Medium Leaf	White Clover
Crusader	Medium Leaf	White Clover
Iona	Small Leaf	White Clover

#### Recommended sowing rate:

30 - 35 kgs/ha (12 - 14 kgs/acre)

#### Tetraploid content: 35.00%

#### Average Heading Date:

1st May + 42 days

#### Mixture breakdown

Intermediate Perennial Ryegrass	35.00%
Late Perennial Ryegrass	35.00%
Early Perennial Ryegrass	15.00%
Timothy	7.50%
White Clover	7.50%

#### Features

- A traditional dual-purpose mixture using a spread of early, mid and late ryegrasses to give early spring growth followed by occasional cutting or season-long grazing (very flexible).

- Ideal for mixed farms requiring a long-term dual-purpose mixture with early bite and is especially useful when grass is required for lambing ewes.
- Winter hardy tetraploids are included.

#### Benefits

- Season-long growth with good ground cover and winter hardiness.
- Well suited to making hay because of the inclusion of Timothy.

#### Management

- Graze with sheep in early spring to avoid early heading ryegrasses going too quickly.
- Can also be shut off late to take a single cut of silage after the early grazing around lambing time.

#### Additional points

- Hybrid or Italian ryegrass can be added if required.
- Cocksfoot can be added at the customer's request if in a drought situation, although care must be taken with cocksfoot as it can become dominant if under-managed.



# Persistor

## Long term dual purpose with early bite

### This mixture includes:

Pensel	Tetraploid	Intermediate Perennial Ryegrass
Evocative	Diploid	Late Perennial Ryegrass
Raccoon	Diploid	Intermediate Perennial Ryegrass
Gracehill	Tetraploid	Late Perennial Ryegrass
Abergain	Tetraploid	Late Perennial Ryegrass
Barclamp	Tetraploid	Hybrid Ryegrass
Boyne	Diploid	Intermediate Perennial Ryegrass
Comer		Timothy
Demand	Medium Leaf	White Clover
Iona	Small Leaf	White Clover
Rivendel	Large Leaf	White Clover

### Recommended sowing rate:

35 kgs/ha (14 kgs/acre)

### Tetraploid content: 50.00%

### Mixture breakdown

Intermediate Perennial Ryegrass	42.86%
Late Perennial Ryegrass	35.72%
White Clover	8.93%
Hybrid Ryegrass	7.14%
Timothy	5.36%

### Features

- Designed to give the grassland farmer a high performance with inclusion of Timothy.
- Early growth and good aftermath grazing.

### Benefits

- Combined with the high sugar grasses and tetraploids, it will produce high levels of excellent forage for all categories of stock.
- Fast recovery from all grasses gives added yield.

### Management

- Wide spread of grasses gives all-season growth.

### Additional points

- Timothy gives early bite and aftermath grazing.
- Hybrid inclusion gives early production and higher grass yields.

# Teviot

## Dual purpose mixture

### This mixture includes:

Boyne	Diploid	Intermediate Perennial Ryegrass
Pensel	Tetraploid	Intermediate Perennial Ryegrass
Evocative	Diploid	Late Perennial Ryegrass
Nashota	Tetraploid	Late Perennial Ryegrass
Toddington	Diploid	Late Perennial Ryegrass
Ballintoy	Tetraploid	Late Perennial Ryegrass
Nifty	Diploid	Intermediate Perennial Ryegrass
Seagoe	Tetraploid	Intermediate Perennial Ryegrass
Raccoon	Diploid	Intermediate Perennial Ryegrass
Comer		Timothy
Iona	Small Leaf	White Clover
Alice	Large Leaf	White Clover

### Recommended sowing rate:

35 - 40 kgs/ha (14 - 16 kgs/acre)

### Tetraploid content: 35.00%

### Average Heading Date:

1st May + 46 days

### Mixture breakdown

Intermediate Perennial Ryegrass	49.00%
Late Perennial Ryegrass	38.00%
Timothy	7.00%
White Clover	6.00%

### Features

- A traditional dual-purpose mixture for cutting or grazing under a low input mixed farm system.

- Provides a good cut of silage/hay followed by aftermath grazing.
- Combines tetraploid and diploid first choice to give yield, quality and ground cover.

### Benefits

- Long seasonal growth.
- Persistent, tight sward to maintain yield and to help avoid poaching.

### Management

- Hard sheep grazing may cause Timothy to be less persistent.
- If it's cut every year, Timothy can dominate.
- Best suited to cattle and sheep grazing management with the occasional cut.

### Additional points

- Italian or hybrid ryegrass can be added if required to provide production in the establishment year.

# Bowmont

## Dual purpose long term cut and graze

This mixture includes:

Evocative	Diploid	Late Perennial Ryegrass
Gracehill	Tetraploid	Late Perennial Ryegrass
Fintona	Tetraploid	Intermediate Perennial Ryegrass
Nifty	Diploid	Intermediate Perennial Ryegrass
Pensel	Tetraploid	Intermediate Perennial Ryegrass
Raccoon	Diploid	Intermediate Perennial Ryegrass
Nashota	Tetraploid	Late Perennial Ryegrass
Seagoe	Tetraploid	Intermediate Perennial Ryegrass
Boyne	Diploid	Intermediate Perennial Ryegrass
Buddy	Medium Leaf	White Clover
Demand	Medium Leaf	White Clover
Alice	Large Leaf	White Clover

### Recommended sowing rate:

35 - 40 kgs/ha (14 - 16 kgs/acre)

**Tetraploid content:** 52.00%

### Average Heading Date:

1st May + 44 days

### Mixture breakdown

Intermediate Perennial Ryegrass	55.50%
Late Perennial Ryegrass	37.00%
White Clover	7.50%

### Features

- Our highest yielding long-term mixture for cutting and grazing.
- Combines a good spread of first choice varieties to give spring grazing followed by a silage cut.
- Can be cut again or the aftermath used for grazing.
- Combines tetraploid and first choice diploid to

give yield, quality and ground cover with winter hardiness – varieties proven to be persistent, giving a tight sward especially under sheep grazing management.

### Benefits

- The mixture is extremely flexible and will respond well in high or low input systems.
- Responsive to high yield inputs of nitrogen so can be used under a more intensive situation for maximum yields.
- High D-value grasses for quality silage.

### Management

- For maximum yield, start growth with an early application of nitrogen followed by the balance when the field is shut up. If taking two cuts, do the first cut at or around mid-heading and the second cut five to six weeks later.

### Additional Points

- Italian or hybrid ryegrasses can be added for establishment year bulk.
- Includes large-leaved white clover Alice, which is most suited to the cutting regime.

# Endurance

TOP SELLER

## Dual purpose long term cut and graze

This mixture includes:

Nashota	Tetraploid	Late Perennial Ryegrass
Nifty	Diploid	Intermediate Perennial Ryegrass
Evocative	Diploid	Late Perennial Ryegrass
Ballintoy	Tetraploid	Late Perennial Ryegrass
Toddington	Diploid	Late Perennial Ryegrass
Gracehill	Tetraploid	Late Perennial Ryegrass
Abergain	Tetraploid	Late Perennial Ryegrass
Abergreen	Diploid	Intermediate Perennial Ryegrass
Comer		Timothy
Alice	Large Leaf	White Clover
Iona	Small Leaf	White Clover
Rivendel	Large Leaf	White Clover

### Recommended sowing rate:

35 kgs/ha (14 kgs/acre)

**Tetraploid content:** 42.86%

### Mixture breakdown

Intermediate Perennial Ryegrass	21.42%
Late Perennial Ryegrass	64.29%
White Clover	8.93%
Timothy	5.36%

### Features

- Specifically designed for long term cutting and grazing.
- Higher sugar levels in tetraploids.

### Benefits

- Improved palatability due to high sugar levels encourages stock to eat more.
- Clover remains the best source of vitamins and trace elements and improves productivity.
- Timothy gives high yields in hay and silage crops.
- Excellent D-value grasses.

### Management

- Wide growth period



# Tweed

## Permanent Pasture long term grazing

This mixture includes:

Toddington	Diploid	Late Perennial Ryegrass
Boyne	Diploid	Intermediate Perennial Ryegrass
Gracehill	Tetraploid	Late Perennial Ryegrass
Nifty	Diploid	Intermediate Perennial Ryegrass
Raccoon	Diploid	Intermediate Perennial Ryegrass
Aberzeus	Diploid	Intermediate Perennial Ryegrass
Pensel	Tetraploid	Intermediate Perennial Ryegrass
Abergreen	Diploid	Intermediate Perennial Ryegrass
Iona	Small Leaf	White Clover
Evocative	Diploid	Late Perennial Ryegrass
Rivendel	Medium Leaf	White Clover
Alice	Large Leaf	White Clover

### Recommended sowing rate:

30 - 35 kgs/ha (12 - 14 kgs/acre)

**Tetraploid content:** 19.00%

### Average Heading Date:

1st May + 41 days

### Mixture breakdown

Intermediate Perennial Ryegrass	55.00%
Late Perennial Ryegrass	38.00%
White Clover	7.00%

### Features

- A ley designed for mixed grazing in an intensive or extensive management system.
- Can be cut occasionally if required.
- Excellent ground cover providing a very tight sward.

### Benefits

- Maximum grazing yield throughout producing high quality palatable grass all season.
- In a low input situation, this mixture provides sustained grazing throughout the season.
- Extremely winter hardy and persistent producing high yields over many years.

### Management

- In high input situations, maximum yield can be attained by regular applications of nitrogen during the growing season.

### Additional Points

- Hybrid or Italian ryegrass can be added if required to enhance yield during the early establishment years, especially if the initial year is managed as a cut.
- In a cattle grazing situation, MSP 'Cutting' Clover Blend should be used.

# Endurance Upland

## Dual purpose long term cut and graze

This mixture includes:

Evocative	Diploid	Late Perennial Ryegrass
Pensel	Tetraploid	Intermediate Perennial Ryegrass
Boyne	Diploid	Intermediate Perennial Ryegrass
Abergreen	Diploid	Intermediate Perennial Ryegrass
Nashota	Tetraploid	Late Perennial Ryegrass
Comer		Timothy
Donata		Cocksfoot
Lofa		Hybrid Fescue
Demand	Medium Leaf	White Clover
Iona	Small Leaf	White Clover
Rivendel	Large Leaf	White Clover
Maxima		Red Fescue

### Recommended sowing rate:

35 kgs/ha (14 kgs/acre)

**Tetraploid content:** 29.99%

### Mixture breakdown

Intermediate Perennial Ryegrass	46.66%
Late Perennial Ryegrass	31.67%
White Clover	8.33%
Timothy	5.00%
Cocksfoot	3.34%
Hybrid Fescue	3.34%
Red Fescue	1.66%

### Features

- Long term mixture for both cattle and sheep which will last more than 10 years.
- Higher sugar levels in tetraploids.

### Benefits

- Improved palatability due to high sugar levels encourages stock to eat more.
- Clover remains the best source of vitamins and trace elements and improves productivity.
- Higher inclusion rate of an excellent clover blend will give higher daily liveweight gain.
- Excellent D-value grasses.

### Management

- Wide growth period.
- Timothy will give early growth and extended grazing all year round

### Additional Points

- Option for Endurance with Red Clover, containing 13.34% of the Global variety.

# Yarrow

## Permanent pasture long term grazing

This mixture includes:

Toddington	Diploid	Late Perennial Ryegrass
Evocative	Diploid	Late Perennial Ryegrass
Nifty	Diploid	Intermediate Perennial Ryegrass
Abergain	Tetraploid	Late Perennial Ryegrass
Boyne	Diploid	Intermediate Perennial Ryegrass
Fintona	Tetraploid	Intermediate Perennial Ryegrass
Pensel	Tetraploid	Intermediate Perennial Ryegrass
Nifty	Diploid	Intermediate Perennial Ryegrass
Demand	Medium Leaf	White Clover
Iona	Small Leaf	White Clover

**Recommended sowing rate:**

35-40 kgs/ha (14-16 kgs/acre)

**Tetraploid content:** 30.00%

**Average Heading Date:**

1st May + 43 days

**Mixture breakdown**

Intermediate Perennial Ryegrass	45.00%
Late Perennial Ryegrass	47.00%
White Clover	8.00%

**Features**

- A mix designed for predominantly sheep grazing due to high clover inclusion.
- More suited to a low input system with a heavy reliance on clover.
- Especially suited to late grazing of lambs, with the clover enhancing live weight gain.

**Benefits**

- Palatable season long growth.
- Persists well with frequent defoliation management (eg. sheep grazing).
- Less use of fertiliser nitrogen.

**Management**

- Grazes at regular intervals and grows well into autumn.

**Additional Points**

- Not suited where large applications of nitrogen are planned.
- If the clover was replaced with MSP 'Cutting' Clover Blend, this mixture would produce a medium-term intensive cutting ley suitable for one or two cuts per year.

# MSP Herb Ley

## Permanent pasture long term grazing

This mixture includes:

Seagoe	Tetraploid	Intermediate Perennial Ryegrass
Donata		Cocksfoot
Raccoon	Diploid	Intermediate Perennial Ryegrass
Lofa		Hybrid Fescue
Comer		Timothy
Herb Blend		Herb
Barelite		Tall Fescue
Demand	Medium Leaf	White Clover
Iona	Small Leaf	White Clover
Rivendel	Large Leaf	White Clover
Dakisha		Meadow Fescue

**Recommended sowing rate:**

35 kgs/ha (14 kgs/acre)

**Tetraploid content:** 16.25%

**Features**

- All-round mixture suitable for cattle and sheep, while also providing food and habitat for insects, including crop pollinators.

**Benefits**

- Diverse range of varieties has shown a reduction in the amount of fertiliser needing to be applied.
- Our research has shown that lambs grazing this kind of mixture are healthier and have a better daily liveweight gain over a shorter period.
- Increased soil health.

**Additional Points**

- An MSP Herb Ley sown in spring 2019 at 14 kgs/acre grazed six ewes in lamb with triplets. It was top-dressed with 50kgs of 20:10:10. The ewes lambed on field grazed nine ewes per acre with twins grass-only fed. In summer, it was top-dressed with another 50kgs of 20:10:10. The lambs were spained and fattened with grass over summer and autumn before the ewes went back to the tup.



# MSP Diamond

## Permanent pasture long term grazing

This mixture includes:

Abergain	Tetraploid	Late Perennial Ryegrass
Aberzeus	Diploid	Intermediate Perennial Ryegrass
Ballintoy	Tetraploid	Late Perennial Ryegrass
Boyne	Diploid	Intermediate Perennial Ryegrass
Comer		Timothy
Fintona	Tetraploid	Intermediate Perennial Ryegrass
AberClaret		Red Clover
Iona	Medium Leaf	White Clover
Toddington	Diploid	Late Perennial Ryegrass
Violin	Large Leaf	White Clover

**Recommended sowing rate:**

15kgs/acre

**Tetraploid content:** 38.33%

### Mixture breakdown

Intermediate Perennial Ryegrass	17.00%
Late Perennial Ryegrass	21.33%
White Clover	13.39%
Red Clover	8.30%
Timothy	3.33%

### Features

- High grazing performance.
- High protein silage.
- Quality aftermath grazing.

### Benefits

- Lower bagged Nitrogen requirement.
- High sugar grasses.
- Contains both white & red clover.

### Additional Points

- Longer term grass mixture that now provides added quality over the early years.



# MSP Leisure

## Amenity Mixture

This mixture includes:

Toddington	Diploid	Late Perennial Ryegrass
Maxima		Creeping Red Fescue

**Recommended sowing rate:**

25 kg/acre 65 kg/Ha

### Features

- Extreme sward density and good wear tolerance.
- Designed to be low maintenance, so better than a field-type mixture.
- Much lower sowing rate than an amenity type mixture.

### Benefits

- Ideal for caravan parks, solar farms, riverbanks, verges, fruit farms and orchards.
- Has an attractive appearance with a good dark green colour.

### Additional Points

- This mixture will NOT provide a lawn finish.
- Although the sowing rate is higher than agricultural mixtures it is considerably less than the rate required by a true amenity mixture.





# FORAGE CROPS



MSP Forage Crop Mixture, Cloves Farm, Elgin

Forage crops continue to play an important role in building resilient and profitable farming systems across the UK.

By extending the grazing season, they help maximise homegrown feed and reduce reliance on forage stocks and bought-in feeds.

Used as a break crop – particularly from continuous grass – forage crops support healthier soils, improved pasture performance and more flexible rotations. Their deep rooting and high biomass return valuable organic matter and nutrients to the soil, stimulating microbial activity, leaving a nutrient-rich entry for the following crop. The result is an enhanced seedbed for establishment of any following crop.

McCreath Simpson & Prentice is a proud family business with locally based FACTS & BASIS qualified farm traders who are happy to support decision-making at every stage. From establishment techniques and seed selection through to fertiliser programmes and agrochemical requirements, we can help growers get the most from their forage cropping choices.

**FORAGE CROPS SUPPORT HEALTHIER SOILS, IMPROVED PASTURE PERFORMANCE AND MORE FLEXIBLE ROTATIONS.**



# Your guide to grassland herbicide selection

## Use on established grassland

		For use with a boom sprayer	Pocket size	Dose rate ha	Area treated per pack ha
<b>ProClova® XL</b>	Clover-safe weed control	Use to control docks, plantains, buttercups, dandelions, chickweed, hogweed and cow parsley.	250 g 500 ml	125 g 250 ml	2 4.9
<b>Cardinal™</b>	Fast-acting formulation	Use to control docks, nettles, chickweed, buttercups, dandelions, hogweed & cow parsley.	5 litre	1.5 litres	3.3 8.2
<b>Prevail® PRO</b>	Wider-spectrum formulation	Use to control all species of thistles, buttercups and dandelions. Also hogweed and cow parsley.	5 litre	1.67 litres	3 7.4
<b>Envy®</b>		Use to control chickweed, buttercups, docks, daisies and dandelions.	3 litre	2 litres	1.5 3.7
<b>Forefront® T</b>		Use on grazing fields for the highest levels of control of docks, ragwort, thistles, nettles, dandelions and buttercups.	5 litre	2 litres	2.5 6.2

## Use on newly sown leys

		For use with a boom sprayer	Pocket size	Dose rate ha	Area treated per pack ha
<b>ProClova® XL</b>	Clover-safe weed control	Use for wide spectrum weed control including docks, chickweed and redshank.	250 g 500 ml	85 g 165 ml	3 7.4
<b>Leystar®</b>		Use for wide spectrum weed control including docks, thistles, chickweed, redshank and mayweeds.	2 litre	1 litre	2 4.9
<b>Envy®</b>		Use to control common and moused-eared chickweed and docks from both seed and root fragments.	3 litre	1.5 litres	2 4.9

## Use to spot treat weeds

		For use ONLY with a knapsack or hand-held lance	Pocket size	Dose rate ha	Area treated per pack ha
<b>Grazon® PRO</b>	Trusted spot treatment chemistry	Fast-acting control of nettles, docks, thistles, brambles, gorse and broom. Comes with measuring cup.	1 litre	60 ml	16 x 10 litre knapsack fills

USE PLANT PROTECTION PRODUCTS SAFELY. Always read the label and product information before use. ® - Trademarks of Corteva Agiscience and its affiliated companies. © 2026 Corteva. For further information go to [www.corteva.com.uk/grassland](http://www.corteva.com.uk/grassland)

## Contact Information



### Grain Store Names/ Locations

**McCreath Simpson & Prentice**  
Tweed Valley Maltings  
Berwick-upon-Tweed  
Northumberland  
TD15 2UZ  
01289 330022

**Gladsmuir**  
Gladsmuir, East  
Lothian

**Sidlaw**  
Burrelton, Perthshire

**Stracathro**  
Stracathro, Angus

**Keith**  
Fife Park Store  
Fife Street  
Keith  
Banffshire  
AB55 5EG  
01542 882378

# Our Team

## SOUTH REGION



**Andy Hindhaugh**  
Commercial Director

andyhindhaugh@mspagriculture.co.uk  
07764 896376



**Michael Hindhaugh**  
Regional Sales Director

michaelhindhaugh@mspagriculture.co.uk  
07980 720791



**Alasdair Ralston**  
Small Seeds Manager

alasdairralston@mspagriculture.co.uk  
07764 896379



**David Cairns**  
Agrochemical & Technical Director

davidcairns@mspagriculture.co.uk  
07764 896380



**John Stafford**  
Farm Trader

johnstafford@mspagriculture.co.uk  
07875 179049



**Rob Ord**  
Farm Trader

robertord@mspagriculture.co.uk  
07764 896374



**Euan Cunningham**  
Farm Trader

euancunningham@mspagriculture.co.uk  
07976 645662



**Lauren Brodie**  
Farm Trader

laurenbrodie@mspagriculture.co.uk  
07973791586



**Robbie King**  
Farm Trader

robbieking@mspagriculture.co.uk  
07875 179042



**Rosie Hamilton**  
Farm Trader & Technical Officer

rosiehamilton@mspagriculture.co.uk  
07764896381

## NORTH REGION



**Robb Milne**  
Regional Sales Director

robbmilne@mspagriculture.co.uk  
07801 240235



**Gordon Booth**  
Business Development Manager

gordonbooth@mspagriculture.co.uk  
07730 638488



**Gary Johnston**  
Farm Trader

garyjohnston@mspagriculture.co.uk  
07831 863127



**Morag Bruce**  
Farm Trader

moragbruce@mspagriculture.co.uk  
07584 572241



**Fraser Harper**  
Farm Trader

fraserharper@mspagriculture.co.uk  
07974 620131



**Derek Lamb**  
Farm Trader

derekclamb@mspagriculture.co.uk  
07929 877689



**Don Peters**  
Seed Specialist

donpeters@mspagriculture.co.uk  
07971817357



**Brodie Bain**  
Trainee Farm Trader

brodiebain@mspagriculture.co.uk  
07967 684394

For general grass seed enquiries, please contact our central email address:  
[grass-seed@mspagriculture.co.uk](mailto:grass-seed@mspagriculture.co.uk)

From here, one of our team will be in touch to assist you.





**McCreath Simpson & Prentice**  
(a trading division of Simpsons Malt Ltd)  
Tweed Valley Maltings,  
Berwick-upon-Tweed, TD15 2UZ  
Tel: 01289 330022  
[grass-seed@mspagriculture.co.uk](mailto:grass-seed@mspagriculture.co.uk)